

Requirements Specification and Rapid Prototype

(Technical Report)

Women Corner Module

RADCON Project

TR/RADCON/2006.12/Edries.1

SUBMITTED BY

AMIRA MOHAMED IBRAHIM IDREES

DECEMBER 2006

APPENDIX A

Requirements Specification

(Technical Report)

Women Corner Module

RADCON Project

TR/RADCON/2006.12/Edries.1

SUBMITTED BY

AMIRA MOHAMED IBRAHIM IDREES

DECEMBER 2006

1. System Model

Based in our objectives for develop a nationwide web-based information system that will use to give the rural women the opportunity to be more effective in the rural society.

The system model assumptions are: Target users have the capabilities for free, easy and efficiency way using. All available information and knowledge will be available by the different stakeholders.

The proposed system consists of three modules that are *women guide, nutrition information, associations guide*.


Users of the modules: In the back-end component, two types of users. First one is data entry (guide) that is responsible for enter all needed information. Second types of back-end user is the administrator (stake holder) that is responsible for acceptance or reject all entered data form the data-entry and publish it to the front-end, in the front end component the users are the interested ones about this information like the rural women, the youth girls and the researchers

1.1 women guide

Definition: this module provides information about information that the women is interested in

Inputs: information needed about this module can be summarized in the following and can be extended later:

Women and children rights, importance of the women socially politically and economically, risks for women and children which include for example risks for children work and lack of education for girls, developing skills for women in different domains, culture of women and children, food nutrition (which contain ways of making, storing, the importance of each type, the economic of the product, ..etc), house keeping(which include decoration, healthy house needs, ..etc), common diseases (include details about its symptoms, treatment, protecting ways from it,.. etc)

 **Each of the listed point is a specified directory and contains information resources, publications, media to efficiently browse the information provided.**

1.2. Nutrition information

Definition: this module provides nutrition information in different aspects, this includes description for food making, food storing methods, balanced daily meals, and nutrition advices. The first part, description for food making, is divided into three parts which are: description for occasion meals, daily meals, and old Egyptian descriptions.

Inputs: detailed food descriptions, detailed descriptions for storing food, advices for balanced meals, advices for healthy food.

1.3. Associations Guide

Definition: this module provides information about the different women associations

- **Inputs:** names, web sites, addresses, phone numbers, fax, emails, ..etc

2. Functional Requirements

2.1 System Setup

This task involves the *System Administrator role*, this role will encompass:

- Creating and distributing system login identifiers and passwords to the authorized members of the community service association.
- Creating and editing the text of Conditions of Use.
- Identifying a contact email address for the system.

2.2 Interfaces

- **Menus**, which provide the ability to obtain information through choice and so avoid any typing errors.
- **Windows**, which is very useful in some situations such as: system help files, error messages, and reports.

Data entry screen should be built to facilitate entering women corner module inputs and maintain the system data. These data entry screens are WEB pages.

2.2 Reports

Reports can be for the end user or the administrator, some examples of the reports for the administrator is the relation between the system user and kind of data entered by this user for which module. Other example of the report for the end user is the report needed for the decision maker which provide the relation of the small projects and geographical places which it is established in and the rate of its success, this helps the decision maker to specify the project he will financially provide.

2.3 Login

All directories, contain two types of users that are data-entry and administrator. Login function is used by user name and password in back-end component to login the system. The main stake holders represents both the data-entry and administrator. The main objective for this function is to save system security and aid the information truth.

3. Non-Functional Requirements

3.1 Security

Different factors will be used to protect the software from accidental or malicious access, use, modification, destruction, or disclosure. Specific requirements in this area could include the need to:

- Assign certain functions to different components (front-end and Back-end). Back-end component have a specific types of users (data-entry and administrator). On the other hand the end-user has different capabilities only in the front-end.*
- Restrict communications between some areas as entered data, published data, rejected data and data after edit.*

3.2 Maintainability

Specify attributes of software that relate to the ease of maintenance of the software itself. There may be some requirement for certain modularity, interfaces, complexity, etc. Different factors will be obtaining to extent this module.

3.3 Performance Requirements

This requirement specifies both the static and the dynamic numerical requirements placed on the software or on human interaction with the software, as a whole. Static numerical requirements may include: The number of terminals to be supported, The number of simultaneous users to be supported, Amount and type of information to be handled.

Static numerical requirements are sometimes identified under a separate section entitled capacity. Dynamic numerical requirements may include, for example, the numbers of transactions and tasks and the amount of data to be processed within certain time periods for both normal and peak workload conditions.

3.4 User friendliness

The system is aimed to be user-friendly enough, support Arabic/English language, and providing help to users at any time.

3.5 Verification and Validation requirements

Verification and validation activities must be done before delivering the final product. The objective of the verification activity is to verify that there are no discrepancy between the implementation and the design. The objective of the validation activity is to ensure that the system is valid and satisfy users' requirements. The following subsections give describe the verification and validation process.

Verification

A meeting must be held to validate the system. The attendees are the staff who are participated in the system development; system designer or national and/or international consultants, national manager, CLAES director, ARC president, RADCON manager and National coordinator, the system developers and the system stakeholders. During the meeting, the test cases used in the verification activity must be run on the computer and system developers collect attendant's comments about the system to modify the system. Another meeting must be held after modifying the system with the same attendees.

Validation

The verification activity is done by generating test cases from the design document that cover different types of queries and URL address. These test cases are filled with appropriate query and predetermined results. The results obtained by running the system on the computer must be the same as the predetermined results for the same input data.

4. References

Document No.	Document Title	Date	Author
	Stakeholders Analysis of Rural and Agricultural Development Communication Network.		Dr. Mohamed H. Kassem,
	Related Web-Sites		

APPENDIX B
Rapid Prototype
(Technical Report)

Women Corner Module

RADCON Project

UTF/EGY/021/EGY

Submitted by

AMIRA MOHAMED IBRAHIM IDREES

DECEMBER 2006

Women Corner Prototype Components

The prototype can be classified into three subsystems: publications for women, nutrition information and women association guide. Each subsystem has two major components: front-end functions (browsing, retrieving, and searching) and back-end functions (data entry and administrative functions). Each function is briefly described below, and screen shots of the user interface are presented.

1. Front-end

In this section we describe the front-end pages. A user can logs in without a user name or password. The home page provides point-and-click access to the major components described previously, as illustrated in the following figure.



1.1 Women Publication subsystem

If we select the publication button, system will give an advanced search, and provide us with all the publications uploaded and it also can browse the details of a selected publication.



If we select the hyperlink of a certain publication, system will retrieve the information included in the selected one, as illustrated in the following figure:



1.2 Nutrition Subsystem

Nutrition subsystem is also divided into four main parts which are: description for food making, food storing methods, balanced daily meals, and nutrition advices.

The first part, description for food making, is divided into three parts which are: description for occasion meals, daily meals, and old Egyptian descriptions.

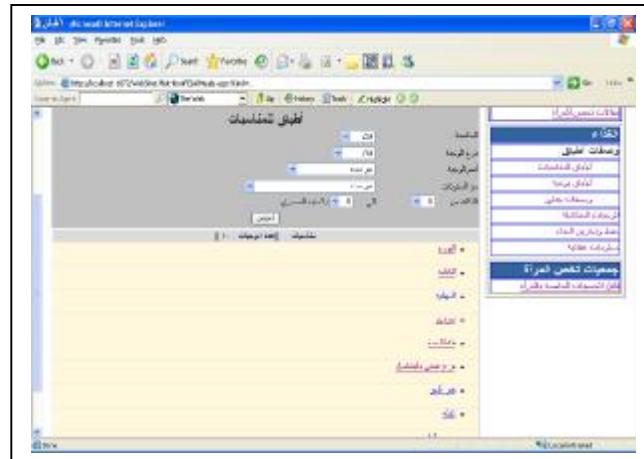
1.2.1 food descriptions:

This part provides the user with information about the details of descriptions for different food flavors.

1.2.1.1 Occasion food descriptions:



If we select search without entering any criteria to search, system will retrieve all the descriptions that available in the system, as illustrated in the following figure:



It is worth notice that, the search result will be divided into pages, where each page contains ten descriptions.

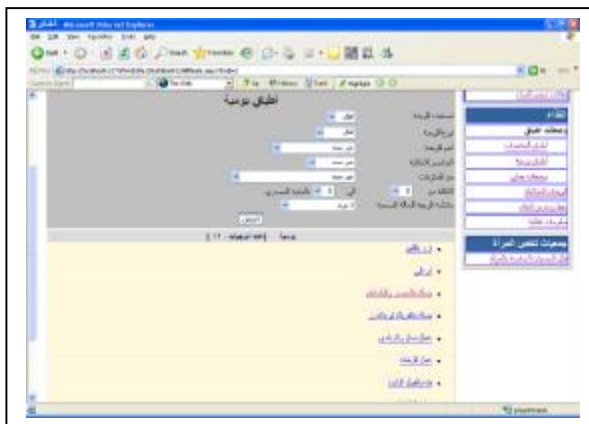
System can search according to different criteria, the occasion name, type, description components, meal name, the cost rang of the meal, and system will display the description data, as illustrated in the following figure:



1.2.1.2 Daily food descriptions:



If we select search without entering any criteria to search, system will retrieve all the descriptions that available in the system, as illustrated in the following figure:



It is worth notice that, the search result will be divided into pages, where each page contain ten descriptions.

System can search according to different criteria, the meal category, type, food elements, description components, meal name, the cost rang of the meal, the disease name that the meal is suitable for, and system will display the description data, as illustrated in the following figure:

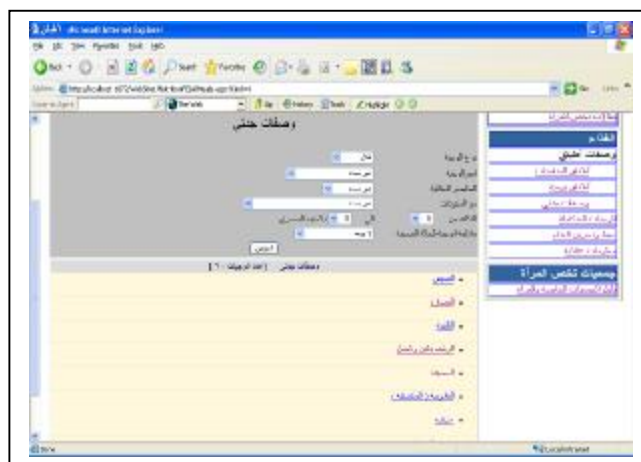




1.2.1.3 Grandmother descriptions:

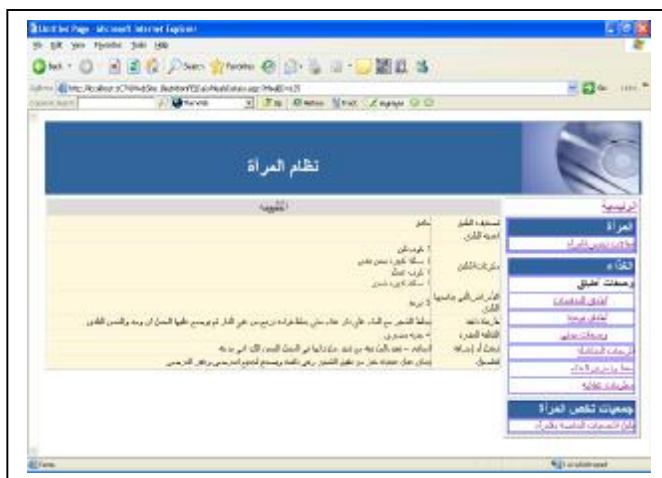


If we select search without entering any criteria to search, system will retrieve all the descriptions that available in the system, as illustrated in the following figure:



It is worth notice that, the search result will be divided into pages, where each page contain ten descriptions.

System can search according to different criteria, the type, food elements, description components, meal name, the cost rang of the meal, the disease name that the meal is suitable for, and system will display the description data, as illustrated in the following figure:

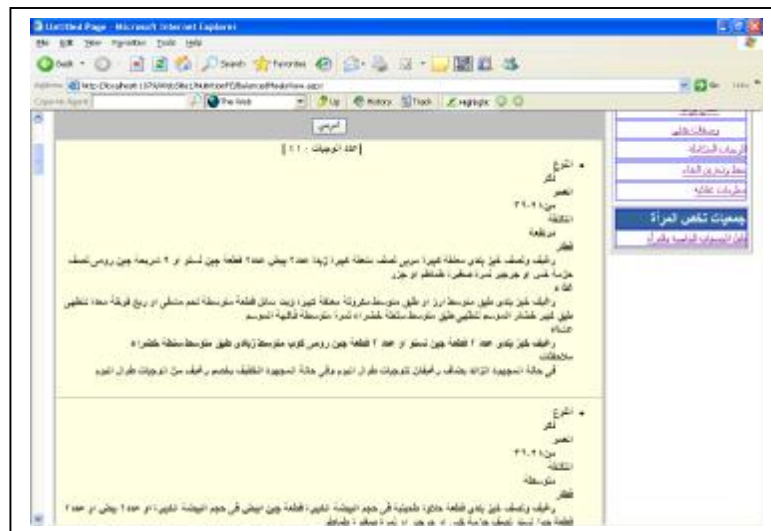


1.2.2 Balanced daily meal:

this part provide the user of information about the right meals for each person according to his age, type, and taking into consideration the cost of the meals, so the user can have a list of the main three meals in a day.

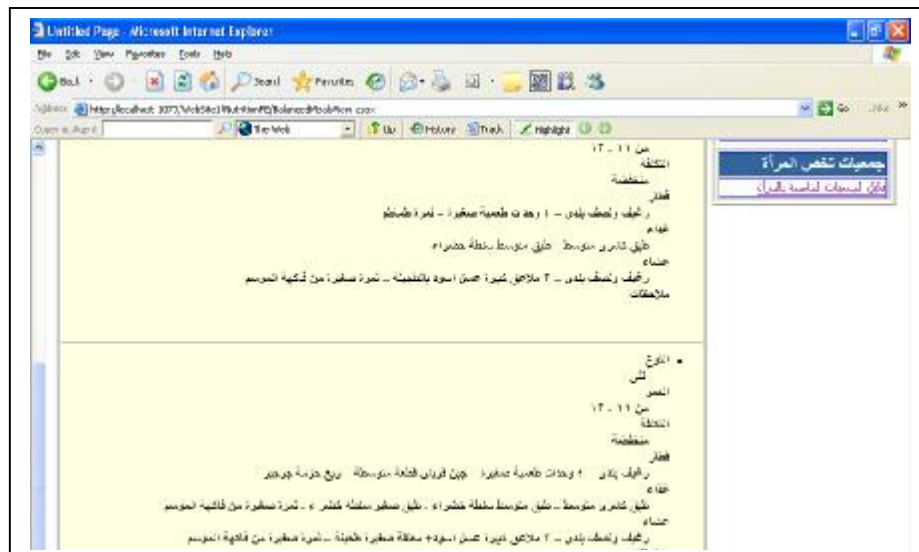


If we select search without entering any criteria to search, system will retrieve all the meals that available in the system, as illustrated in the following figure:



It is worth notice that, the search result will be divided into pages, where each page contains ten descriptions.

System can search according to different criteria, the occasion name, type, description components, meal name, the cost rang of the meal, and system will display the description data, as illustrated in the following figure:

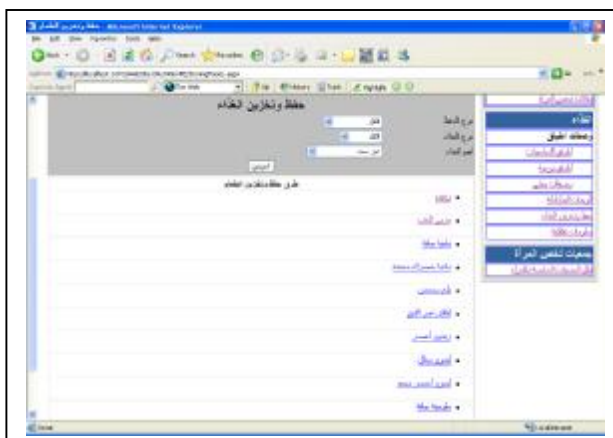


1.2.3 Storing food descriptions:

This part describes different ways to store food and the details of the storing method.



If we select search without entering any criteria to search, system will retrieve all the descriptions that available in the system, as illustrated in the following figure:



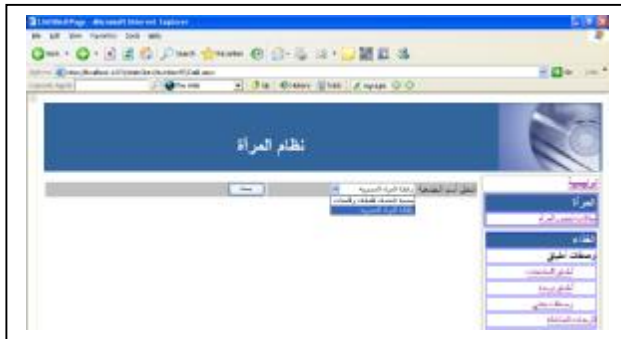
It is worth notice that, the search result will be divided into pages, where each page contains ten descriptions.

System can search according to different criteria, the storing type, food name, food type and system will display the description data, as illustrated in the following figure:



1.3 Women association guide Subsystem

If we select the women association button, system will contact to the database of the community Services Information System Module and provide the system with information about the different women associations

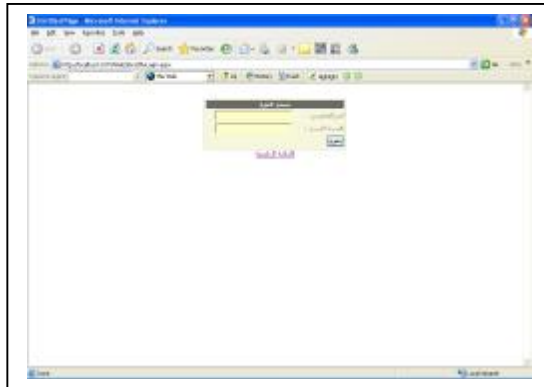


If we select any association, system will display the association data, as illustrated in the following figure:

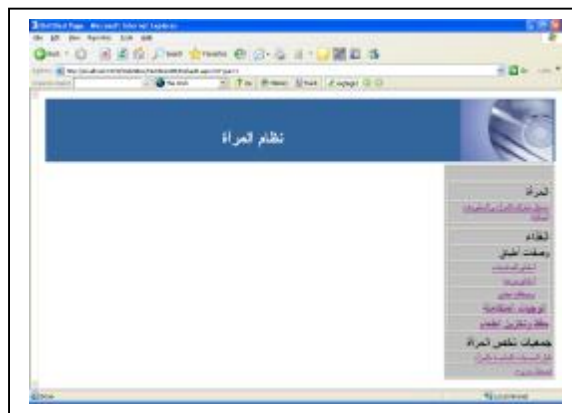


2. Back-end

In this section we describe the back-end pages. A user can logs in with a user name and password. From home page select “ادارة الموقع”, system will display the following page:



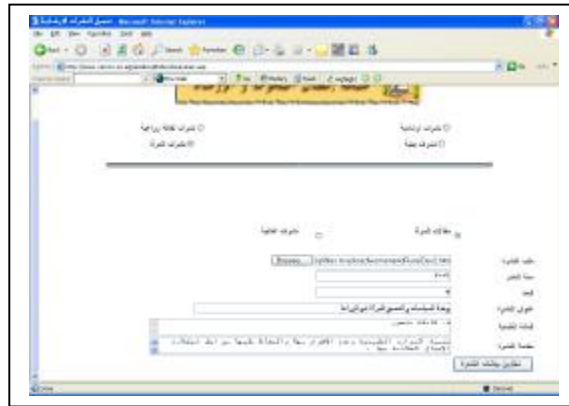
System will direct the user to the main page for data entry.



2.1 Publications Subsystem

If we select publications subsystem, system will contact the vercon uploading system to upload the publication file and its information as follows:





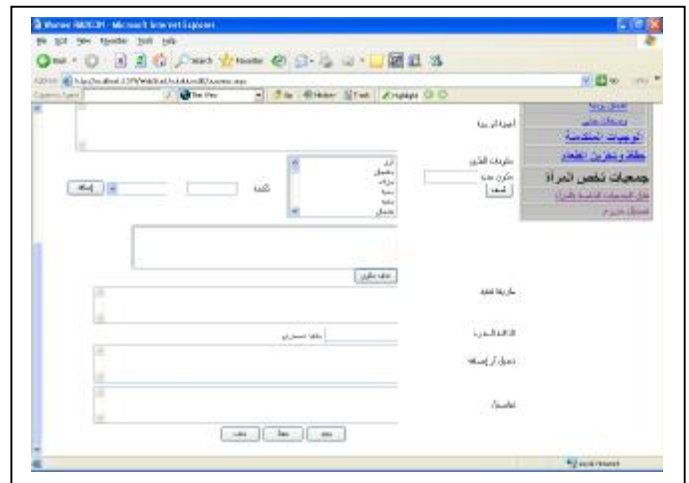
2.2 Nutrition System

This part is responsible for manipulating Nutrition data; it is divided to three main parts, food descriptions, balanced meals, storing food:

2.2.1 Food Descriptions

This part provides the user with information about the details of descriptions for different food flavors.

2.2.1.1 Occasion Food Descriptions



This part is responsible for manipulating the details of occasion food descriptions, this includes adding new descriptions, updating or deleting existing descriptions.

There is a link in the top of the screen direct to the following screen to show that there is a facility to retrieve all descriptions in the database to be reviewed and select the required one. If we select search without entering any criteria to search, system will retrieve all the descriptions that available in the system, as illustrated in the following figure:

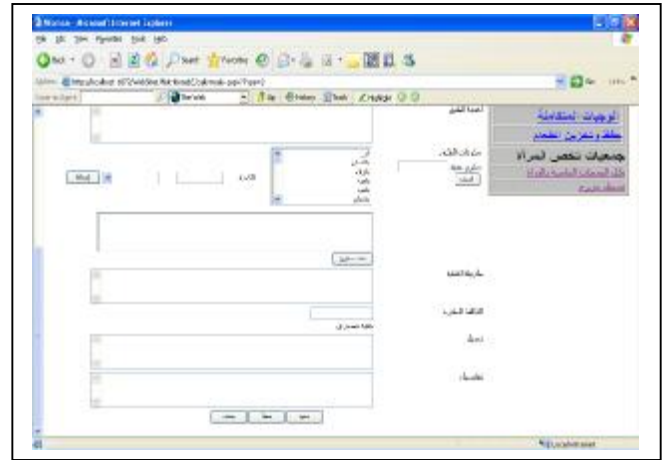
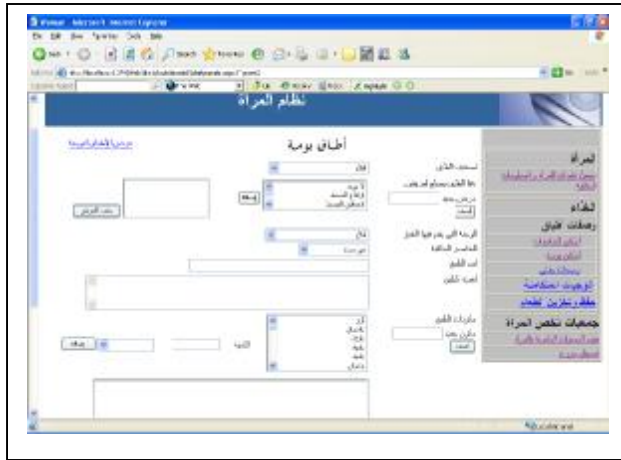


It is worth notice that, the search result will be divided into pages, where each page contains ten descriptions.

System can search according to different criteria, the occasion name, type, description components, meal name, the cost rang of the meal, and system will display the description data, as illustrated in the following figure:



2.2.2 Daily Food Descriptions:



This part is responsible for manipulating the details of daily food descriptions, this includes adding new descriptions, updating or deleting existing descriptions.

There is a link in the top of the screen direct to the following screen to show that there is a facility to retrieve all descriptions in the database to be reviewed and select the required one. If we select search without entering any criteria to search, system will retrieve all the descriptions that available in the system, as illustrated in the following figure:

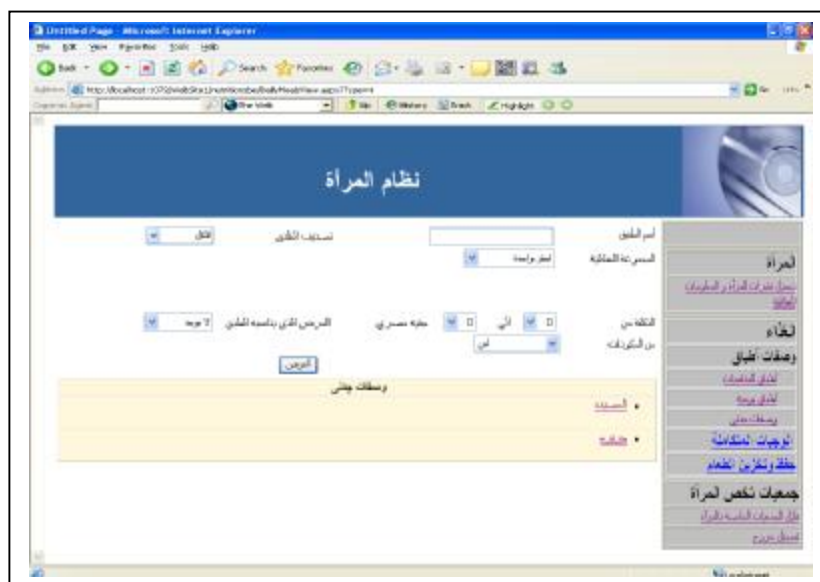


There is a link in the top of the screen direct to the following screen to show that there is a facility to retrieve all descriptions in the database to be reviewed and select the required one. If we select search without entering any criteria to search, system will retrieve all the descriptions that available in the system, as illustrated in the following figure:

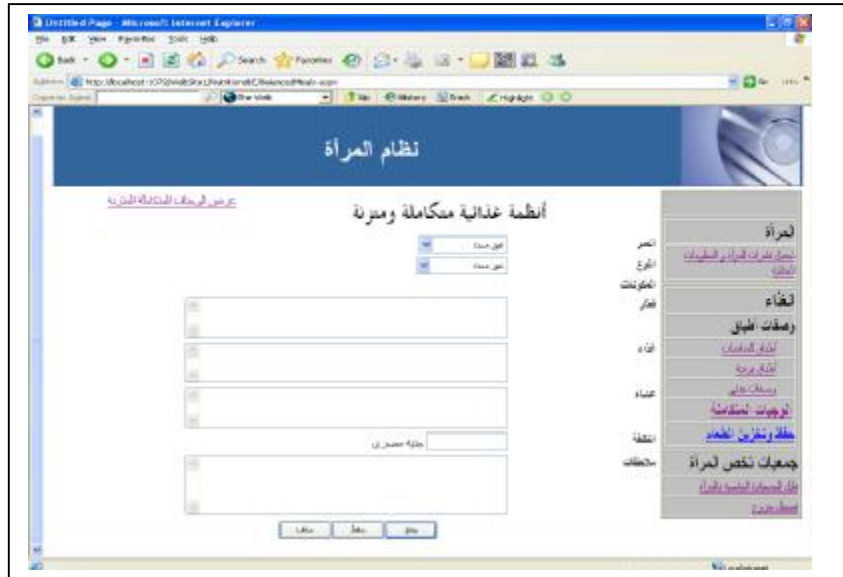


It is worth notice that, the search result will be divided into pages, where each page contains ten descriptions.

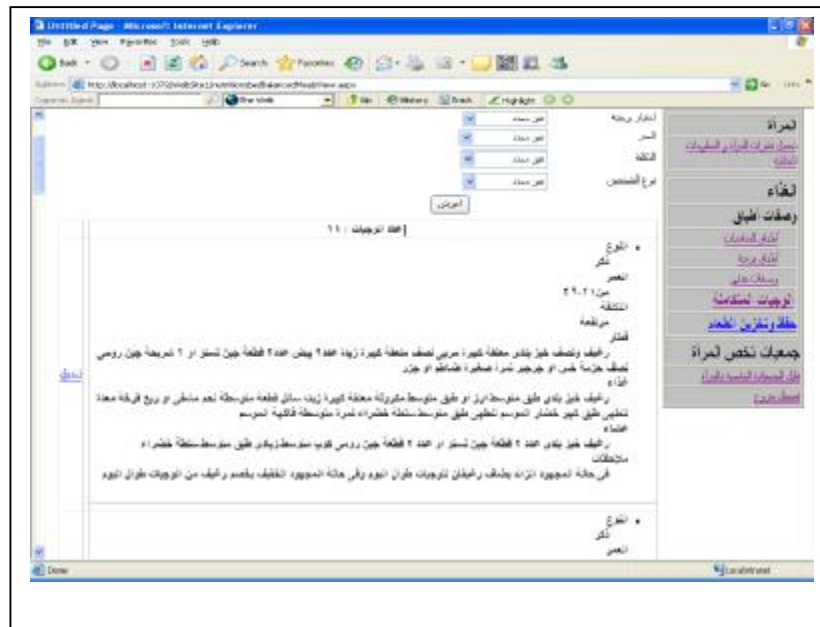
System can search according to different criteria, the occasion name, type, description components, meal name, the cost rang of the meal, and system will display the description data, as illustrated in the following figure:



This part is responsible for manipulating the details of balanced meals, this includes adding new descriptions, updating or deleting existing descriptions.



There is a link in the top of the screen direct to the following screen to show that there is a facility to retrieve all descriptions in the database to be reviewed and select the required one. If we select search without entering any criteria to search, system will retrieve all the descriptions that available in the system, as illustrated in the following figure:



System can search according to different criteria, the occasion name, type, description components, meal name, the cost rang of the meal, and system will display the description data, as illustrated in the following figure:

This part is responsible for manipulating the details of balanced meals, this includes adding new descriptions, updating or deleting existing descriptions.

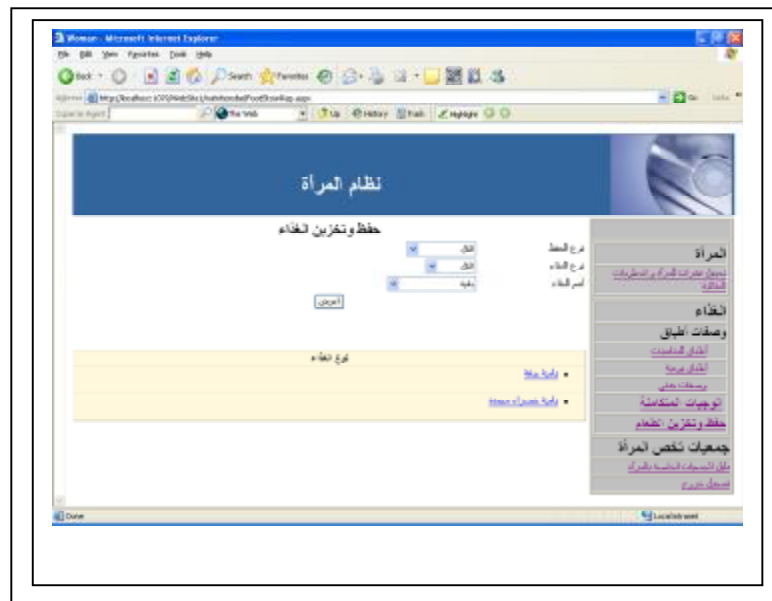
PDF created with FinePrint pdfFactory Pro trial version <http://www.fineprint.com>

search without entering any criteria to search, system will retrieve all the descriptions that available in the system, as illustrated in the following figure:



It is worth notice that, the search result will be divided into pages, where each page contains ten descriptions.

System can search according to different criteria, the occasion name, type, description components, meal name, the cost rang of the meal, and system will display the description data, as illustrated in the following figure:



2.3 Associations System

If we select associations' subsystem, system will contact 'the Community Services Information System Module' and display all associations that available in the system and the status of each association (approved or unapproved), with the following abilities:

- Insert new association,
- Select an association to display its content,
- Update the association data,
- Delete association,
- Search based on the association status.

The steps of using this system are described in 'the Community Services Information System Module' report.