

**TR/RADCON/2006.12/Nada.1**

**Prepared By**

*Ayman Mohammed Mohamed Nada*

## Contents

<b>1</b>	<b>System Models</b> .....	<b>2 -</b>
1.1.	Laws and decrees .....	3 -
1.2	Environment extension Documents: .....	3 -
1.3	Environment pollution problems: .....	3 -
1.4	Clean Agriculture: .....	3 -
1.5	Analysis Centers: .....	4 -
<b>2</b>	<b>Community Services Prototype Components</b> .....	<b>5 -</b>
2.1	Front-end .....	5 -
2.1.1	Law and decrees subsystem .....	6 -
2.1.2	Environment Extension Documents Subsystem.....	8 -
2.1.3	Environment problems in villages Subsystem.....	9 -
2.1.4	Clean Agriculture subsystem .....	10 -
2.1.5	Center Analysis Subsystem .....	11 -
2.2	Back-end .....	12 -
2.2.1	Data Entry User .....	13 -
2.2.1.1	Law and decrees Subsystem .....	13 -
2.2.1.2	Analysis Centers Subsystem .....	15 -
2.2.1.3	Clean agriculture subsystem .....	16 -
2.2.1.4	Environment pollution .....	17 -
2.2.1.5	Environment problems.....	18 -
2.2.2	Administrator User .....	19 -
2.2.2.1	Law and decrees Subsystem .....	19 -
2.2.2.2	Analysis Centers Subsystem .....	21 -
2.2.2.3	Clean agriculture subsystem .....	22 -

## 1 System Models

Based on our objectives for developing a web-based information system that will use to speedy collection and dissemination of environment information, system assumptions and components will be as the following:.

**The system model assumptions are:** Target users have the capabilities for free, easy and efficiency way for using these modules. All available information and publications will be provided by different stakeholders.

**The proposed system consists** of four sub-modules, that *are Laws and decrees, Environment extension Documents, Environment pollution problems, Clean Agriculture and Analysis Centers* as shown in figure 1, with two components that are backend and front-end.

**The backend component** provides the data management functionalities that enable each stockholder to enter/update/delete/publish data items. This component provides the *Environment* module data security, that for each stockholder there is a specific username and password which associated with a specific capability.

**The front end component** provides the information retrieving/browsing/accessing functionalities, and is available for any site user.

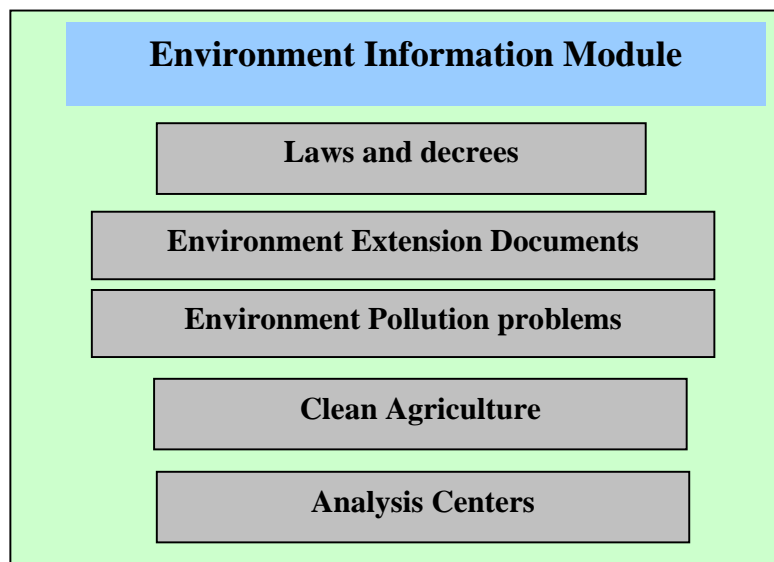


Figure1.System Models Components

### 1.1. Laws and decrees

**Objective:** this sub-module provides adequate information about Environment laws and decrees and their legislative.

**Users:** There are two types of users in the back-end component. First one is data entry, who responsible for entering data and the second is the administrator, who is responsible for acceptance or rejection all entered data form the data-entry and publish it to the front-end.

**Inputs:** The needed information for each law as "legislator subject, law number, law version, law description".

**Output:** - All input data will be used for providing the front-end services and functionality.

### 1.2 Environment extension Documents:

**Objective:** Provides information about the resources of environment pollution and how to Recycle the field and house wastes by safely methods and how to use the recycle product as soil fertilizer.

**Inputs:** Environment extension Documents data as publication decumbent in uploaded from extension document in **VERCON**:

- Meta data about the publication (type, language, title, description).
- The uploaded file (html).

### 1.3 Environment pollution problems:

**Objective:** provides information of Environmental problems that villages is suffer from and the available solution to solved it

**Inputs:**

Add any problem during problem system in **VERCON** after updating for environment problems.

**Output:**

For each problem (governorate name, problem date, problem description, solution date and solution information) is shown.

### 1.4 Clean Agriculture:

## Towards a clean Environment Module

**Objective:** provides operations which can be done on a field to avoid diseases Infection and reduce the use of pesticides.

**Inputs:** input data is *practice* (*practice type, practice name, practice used and importance*).

### 1.5 Analysis Centers:

**Objective:** *Due to the importance of soil and water analysis in determined the suitable crop, high product and protected soil this module display information about different center like “address, telephone and available analysis”.*

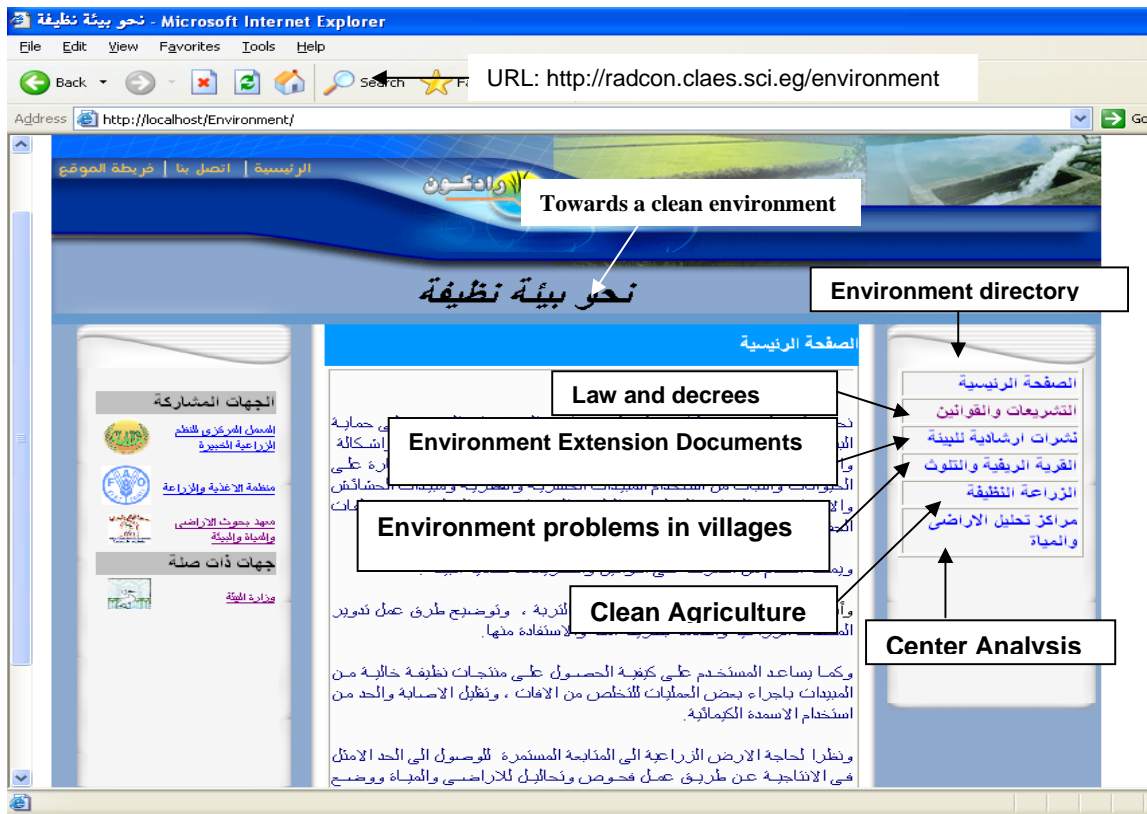
**Inputs:** input data is *analysis center* (*center name, center address, telephone, analysis kind and analysis name*).

## 2 Community Services Prototype Components

The prototype can be classified into five subsystems: law and decrees, Environment extension Documents, Environment pollution problems, Clean Agriculture and Analysis Centers. Each subsystem has two major components: front-end functions (browsing and searching) and back-end functions (data entry and administrative functions). Each function is briefly described below, and screen shots of the user interface are presented.

### 2.1 Front-end

In this section we describe the front-end pages. A user can logs in without a user name or password. The home page provides point-and-click access to the components described previously, as illustrated in the following figure.



### 2.1.1 Law and decrees subsystem

If we select the Law and decrees button, system will give an advanced search, that work along different categories, such as Legislation subject, law number and Release Date.



If we select search without entering any criteria to search, system will retrieve all Legislation and laws or decrees that available in the system, as illustrated in the following figure:

## Towards a clean Environment Module



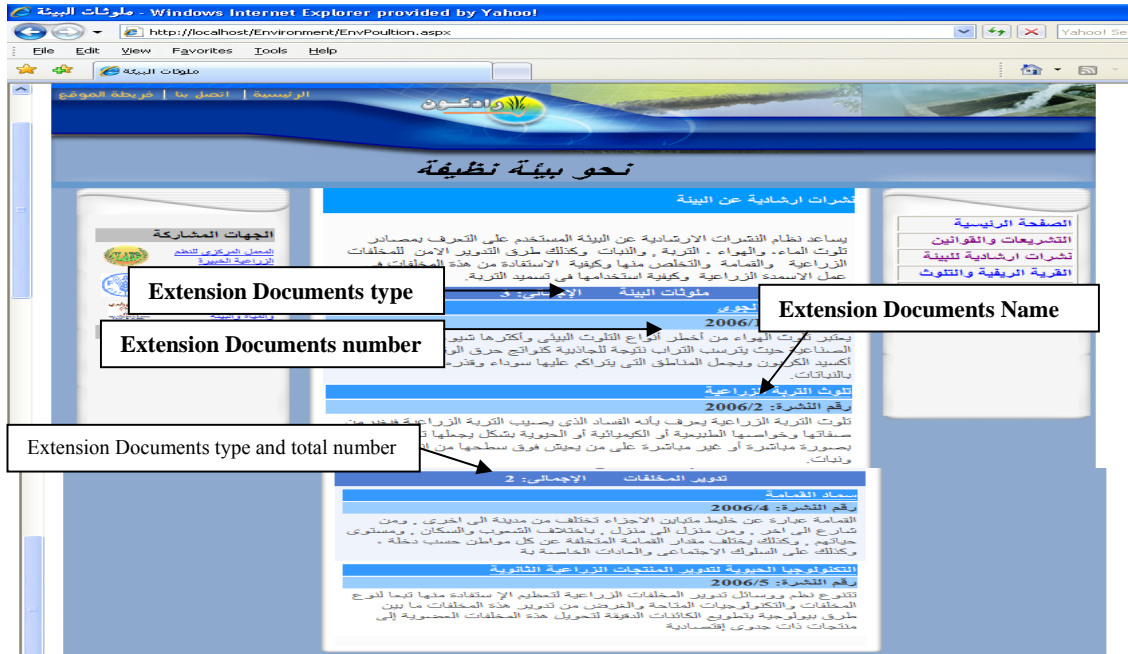
If we select any law, system will display the law data, as illustrated in the following figure:



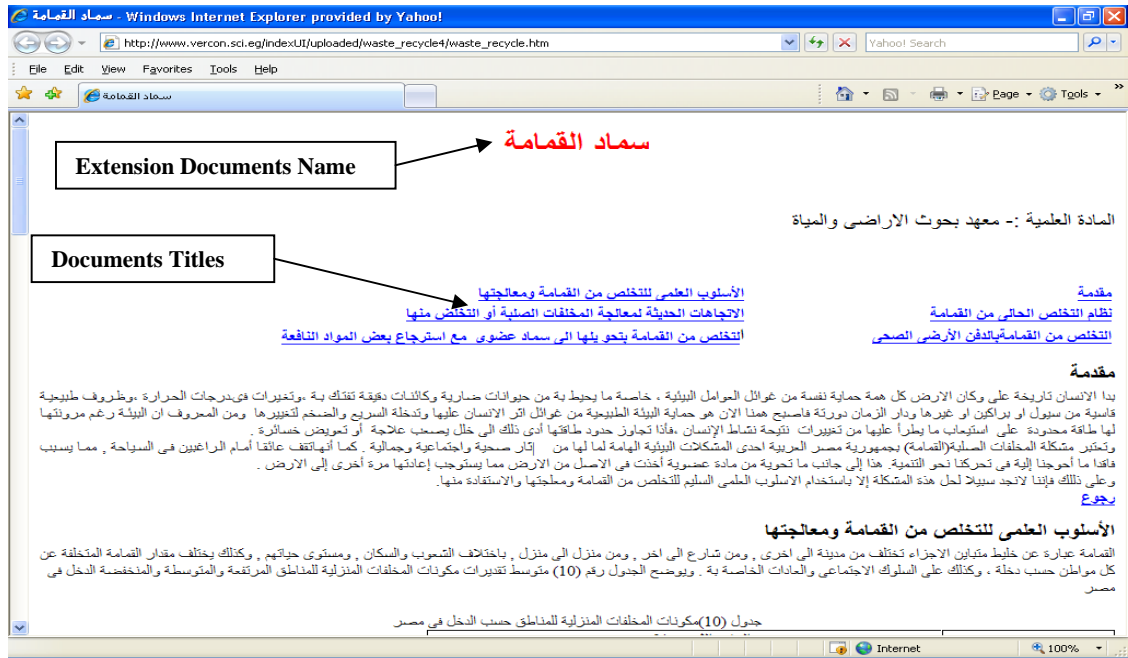


### 2.1.2 Environment Extension Documents Subsystem

If we select the Environment Extension Documents button, system will give an Extension Documents about environment pollution and recycle wastes.

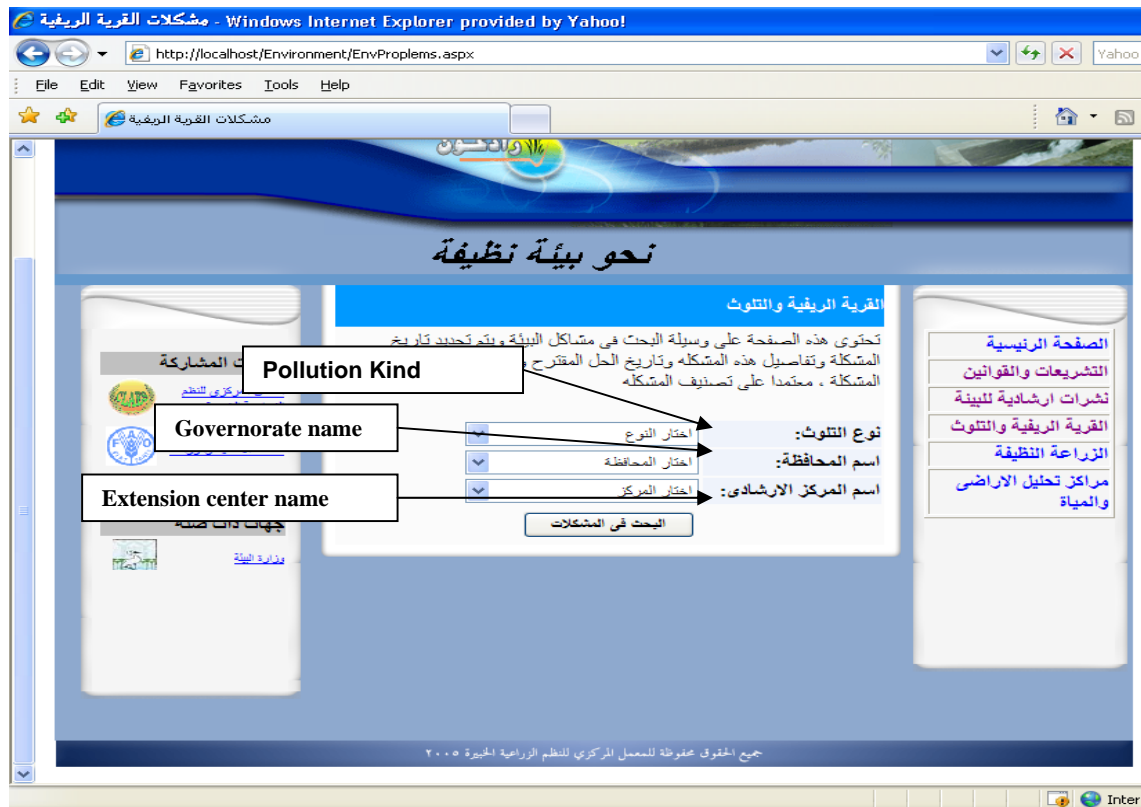


If we click on "Extension Documents Name" system will retrieve the Document available in the system, as illustrated in the following figure:



### 2.1.3 Environment problems in villages Subsystem

If we select the Environment problems in village's button, system will give an advanced search, that work along different categories, such as Pollution Kind, Governorate name and Extension document name



If we select search without entering any criteria to search, system will retrieve all pollution problems that available in the system as show Governorate name, Extension center name, Village name, Problem Date, Problem Details, and Solution Date and suggest Solution and illustrated in the following figure:



### 2.1.4 Clean Agriculture subsystem

If we select the Clean Agriculture button, system will give an advanced search, that work along different categories, such as practice Kind, practice name and disease name.



If we select search without entering any criteria to search, system will retrieve all operation that available in the system as show operation name, operation usage for

diseases protection, Execution method and operation impotence and illustrated in the following figure:

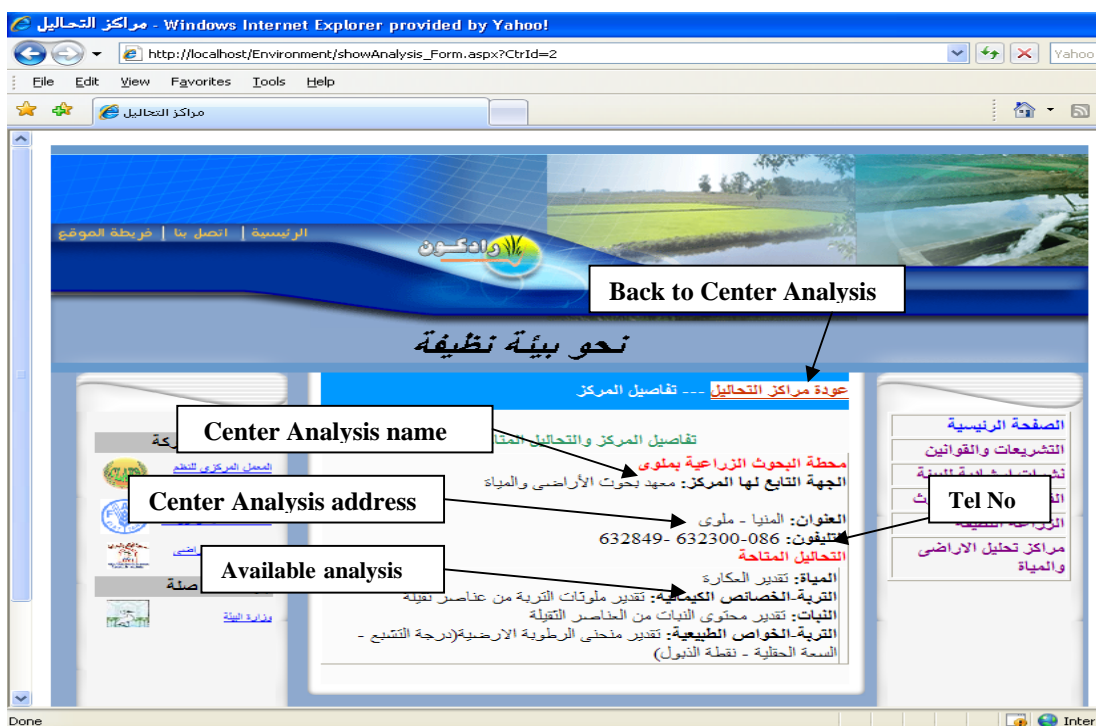


### 2.1.5 Center Analysis Subsystem

If we select the Clean Agriculture button, system will give an advanced search, that work along different categories, such as practice Kind, practice name and disease name.



If we select any center analysis name, system will display the center data, as illustrated in the following figure:



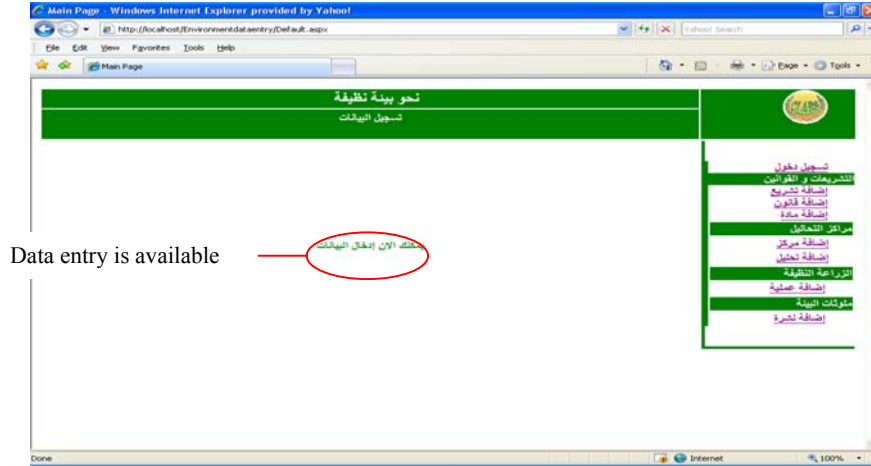
## 2.2 Back-end

In this section we describe the back-end pages. A user can logs in with a user name and password. From home page select “ادارة الموقع”, system will display the following page:



## 2.2.1 Data Entry User

System will direct the user to the suitable page based on the entered user name i.e. if the user name for data entry user, system will display the following page:



### 2.2.1.1 Law and decrees Subsystem

If we select add Legislation "إضافة موضوع تشريع" subsystem, system will display all Legislation that available in the system and the status of each one (approved or unapproved), with the following abilities:

- Insert new Legislation,
- Select an Legislation to display its content,
- Update the Legislation data,

As illustrated in the following figure:

## Towards a clean Environment Module



For adding anew record select "إضافة تشريع جديد"



If we select add law "إضافة قانون" subsystem, system will display all laws that available in the system and the status of each one (approved or unapproved), with the following abilities:

- Insert new law,
- Select an law to display its content,
- Update the law data,

As illustrated in the following figure:



For adding anew low select "إضافة قانون جديد"



### 2.2.1.2 Analysis Centers Subsystem

If we select add Center "إضافة مركز" subsystem, system will display all Analysis Centers that available in the system and the status of each one (approved or unapproved), with the following abilities:

- Insert new Center,
- Select an Center to display its content,
- Update the Center data,

As illustrated in the following figure:





If we select add analysis "إضافة تحليل" subsystem, system will display all soil and water analysis available for selected center name that available in the system and the status of each one (approved or unapproved), with the following abilities:

- Insert new soil and water analysis,
- Select an soil and water analysis to display its content,
- Update the soil and water analysis data,

As illustrated in the following figure:



### 2.2.1.3 Clean agriculture subsystem

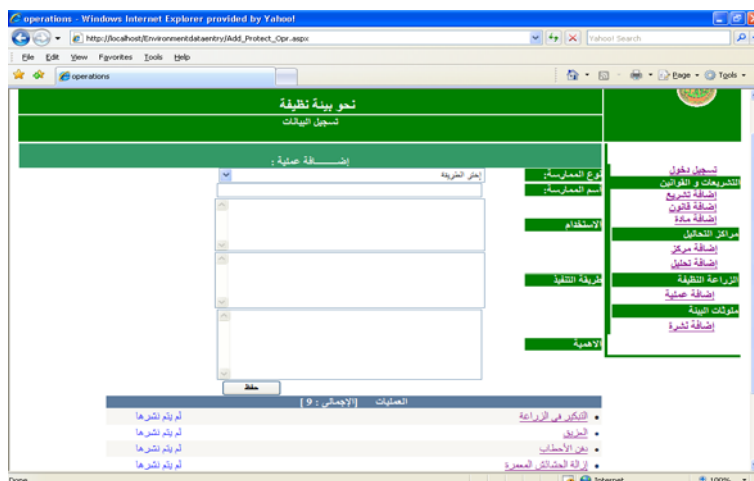
If we select Clean agriculture, system will display all operation practice that available in the system and the status of each practice (approved or unapproved), with the following abilities:

- Insert new practice,

## Towards a clean Environment Module

- Select a practice to display its content,
- Update the practice data,

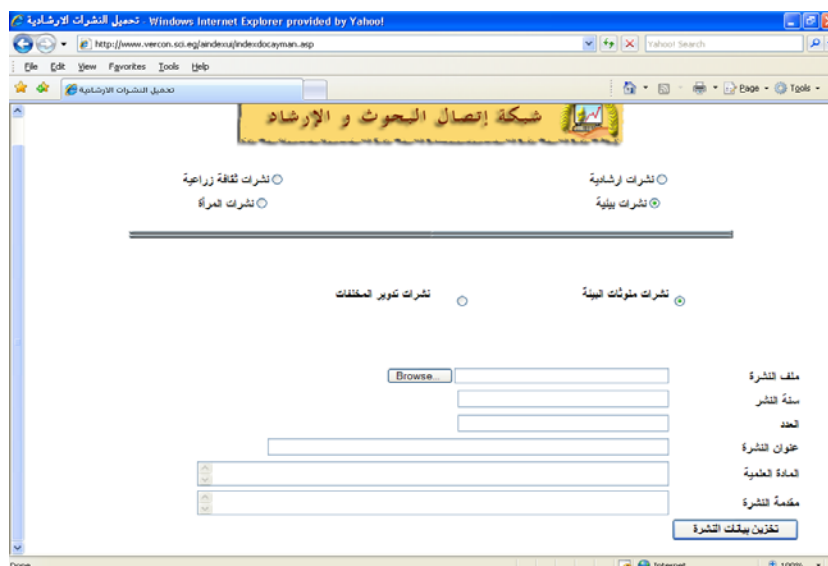
As illustrated in the following figure:



### 2.2.1.4 Environment pollution

If we select Add document, this window is showing you select the "نشرات بيئية" and then select Environment pollution "نشرات ملوثات البيئة" or Recycle wastes "نشرات تدوير المخلفات" and fill all field illustrated in the following figure:

Insert new extension document,



## 2.2.1.5 Environment problems

If we select Environment problems select environment from problems then select details click on "ادخال بيانات المشكلة"



Insert new problem village name, farmer name, problem description, solution description and solution Justifications .

The screenshot shows a web browser window with the URL [http://www.vercon.sci.eg/farm\\_entryNew/Add.asp?catprobidV=18&catsubprobidV=44&plantidV=1&varietyidV=168&varietyT](http://www.vercon.sci.eg/farm_entryNew/Add.asp?catprobidV=18&catsubprobidV=44&plantidV=1&varietyidV=168&varietyT). The page is titled "ادخال بيانات مشاكل المزارعين" (Enter farmer problem data). It contains several input fields: "عدد المزارعين" (Number of farmers) with a value of 0, "القرية" (Village), "اسماء المزارعين" (Farmers names), "وصف المشكلة" (Problem description), "وصف الحل" (Solution description), and "مهارات الحل" (Solution skills). At the bottom, there are two buttons: "اضافه" (Add) and "اعاده" (Reset).

### 2.2.2 Administrator User

If the user name for administrator user, system will display the following page:



#### 2.2.2.1 Law and decrees Subsystem

If we select add Legislation "إضافة موضوع تشريع" subsystem, system will display all Legislation that available in the system and the status of each one (approved or unapproved), with the following abilities:

- Publishing Legislation data, (review and suggestions for improvement)
- Select an Legislation to display its content,
- Update the Legislation data,
- Delete Legislation,

## Towards a clean Environment Module

- Search based on the Legislation status.
- As illustrated in the following figure:



If we select add law "إضافة قانون" subsystem, system will display all laws that available in the system and the status of each one (approved or unapproved), with the following abilities:

- Publishing law data, (review and suggestions for improvement)
- Select an law to display its content,
- Update the law data,
- Delete law,
- Search based on the law status.

As illustrated in the following figure:



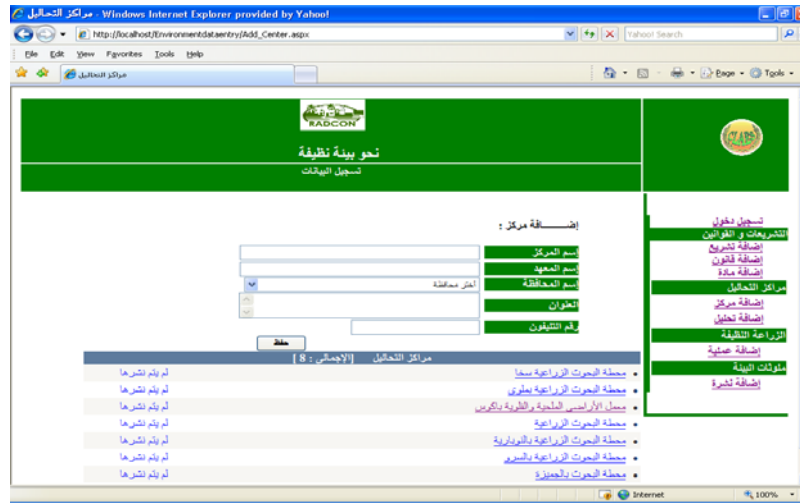
### 2.2.2.2 Analysis Centers Subsystem

If we select add Center "إضافة مركز" subsystem, system will display all Analysis Centers that available in the system and the status of each one (approved or unapproved), with the following abilities:

- Publishing Center data, (review and suggestions for improvement)
- Select an Center to display its content,
- Update the Center data,
- Delete Center,
- Search based on the Center status.

As illustrated in the following figure:

## Towards a clean Environment Module



If we select add analysis "إضافة تحليل" subsystem, system will display all soil and water analysis available for selected center name that available in the system and the status of each one (approved or unapproved), with the following abilities:

- Publishing soil and water analysis data, (review and suggestions for improvement)
- Select an soil and water analysis to display its content,
- Update the soil and water analysis data,
- Delete soil and water analysis,
- Search based on the soil and water analysis status

As illustrated in the following figure:



### 2.2.2.3 Clean agriculture subsystem

If we Clean agriculture, system will display all operation practice that available in the system and the status of each practice (approved or unapproved), with the following abilities:

- Publishing practice data, (review and suggestions for improvement)

## **Towards a clean Environment Module**

- Select practice to display its content,
- Update the practice data,
- Delete practice,
- Search based on the practice status

As illustrated in the following figure: